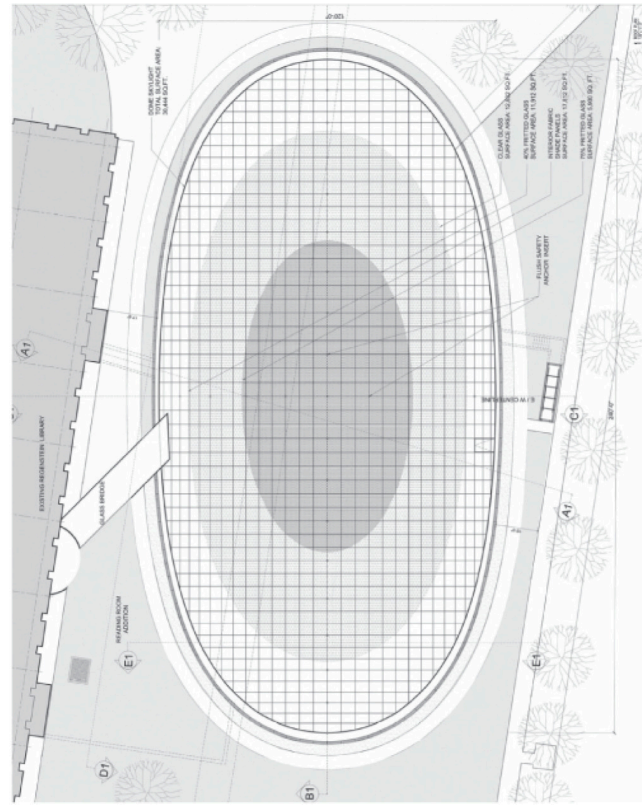
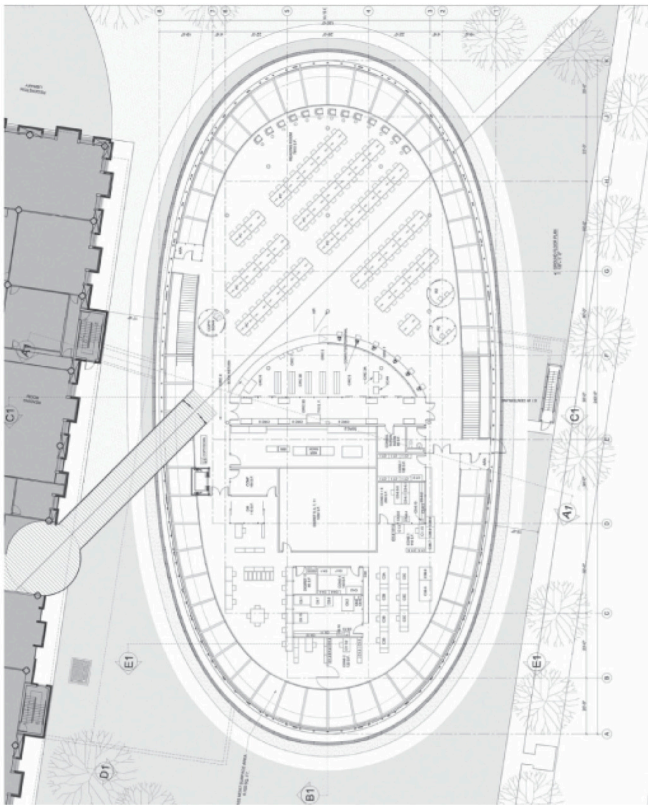
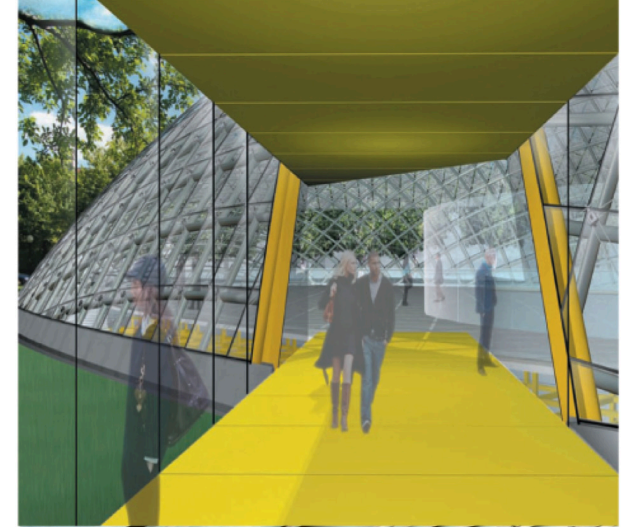
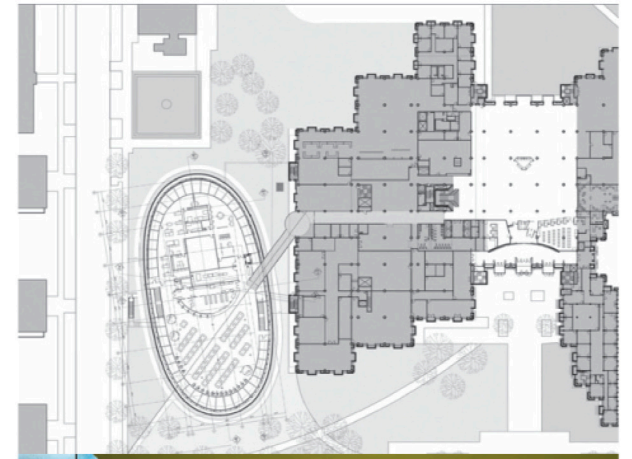


Murphy/Jahn



The University of Chicago is asking for and addition to the Regenstein library, which was designed and built by S.O.M in the 1960ies. A bridge connects the new library dome with the existing building. The automated stacking system is lowered 53 ft into the ground, building the basis for the ground floor platform. A moat emphasizes the floating of the ground floor .

design development



AutoCad 2006
model shop (laser)

presentations



Powerpoint
Photoshop

existing plans into CAD

AutoCad 2006

quantity survey

